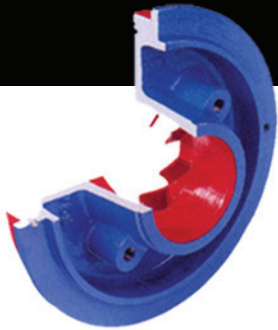
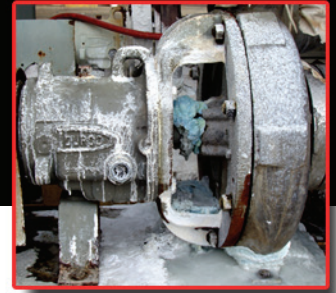


Seal failures costing you TIME and DOLLARS?

*ProCast teams with Goulds
to solve your problems...*



Introducing

ProCast TaperBore™ PLUS Seal Chamber to fit Flowserve (Durco) Mark III ANSI Pumps

The ProCast patented TaperBore™ PLUS Design outperforms the axial rib design on Flowserve seal chambers. Used successfully for years on Goulds' pumps to solve seal failures, the TaperBore Plus is now available to fit Flowserve (Durco) Mark III ANSI Pumps.



ProCast TaperBore™ PLUS with a Vane Particle Ejector

The TaperBore™ PLUS significantly improves flow around the seal for improved heat dissipation and lubrication. The unique flow path created by the Vane Particle Ejector directs solids away from the mechanical seal, not at the seal. And, the amount of solids entering the bore is minimized. Air and vapors are also efficiently removed, eliminating dry run failures. Handles up to 10% solids with no seal flush to save on plant water. Extended seal and pump life with lower maintenance costs are the results.



Flowserve Seal Chamber with Axial Ribs

The flow pattern places the seal in the path of solids flow. On services with significant solids (greater than 1%), solids pack the seat, springs, or bellows, impinge on seal faces and ultimately cause seal failure.

Consider the cost of a seal failure and the annual occurrences in your plant.

- Mechanical Seal Cost
- Direct Labor
- Maintenance Management
- Lost Production
- Environmental / Safety and Health Issues
- Improper Heat Dissipation (cooling)
- Poor Lubrication of the Seal Faces
- Seals Operating in Liquids Containing Solids, Air or Vapors

TaperBore™ PLUS will help you realize a quick Return On Investment. Don't waste your budget on constant seal failures. Upgrade your Mark III with a TaperBore™ PLUS Seal Chamber and redirect assets to improve reliability elsewhere in your plant.

The bottom line is lower maintenance costs.

Contact your local ProCast representative at 1-800-278-7117
or www.procastparts.com for all inquiries.
Also be sure to ask about other replacement parts to fit the Mark II & III pumps.

